

What's New with CT Trail Finder and CT Trail Census

Emily H. Wilson, Geospatial Extension Educator, UConn CLEAR, CT Trails Program

Aaron Budris, Environmental Planning Director, NVCOG

Anita Morzillo, Associate Professor, UConn Dept. of Natural Resources and the Environment

Outline

- Program Overview
- CT Trail Finder
 - Benefits for trail users
 - Benefits for trial managers
 - Trail Finder Posts
- CT Trail Finder Process
- Coming soon - Trailside services
- CT Trail Finder vs AllTrails
- Questions



UConn CT Trails Program

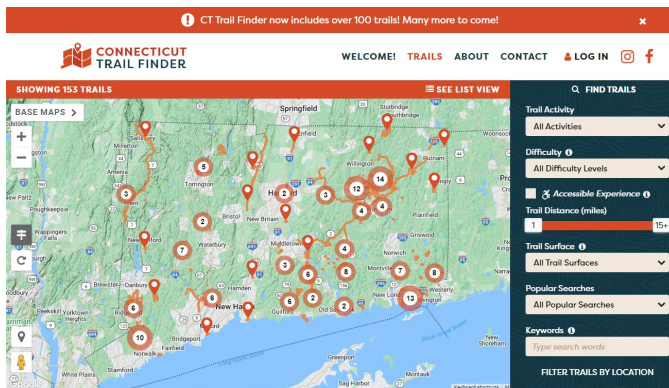
<https://cttrails.uconn.edu/>



CT Trail Census



CT Trail Finder



cttrailfinder.com



Support the Trail Community

Active Living (PATHS)

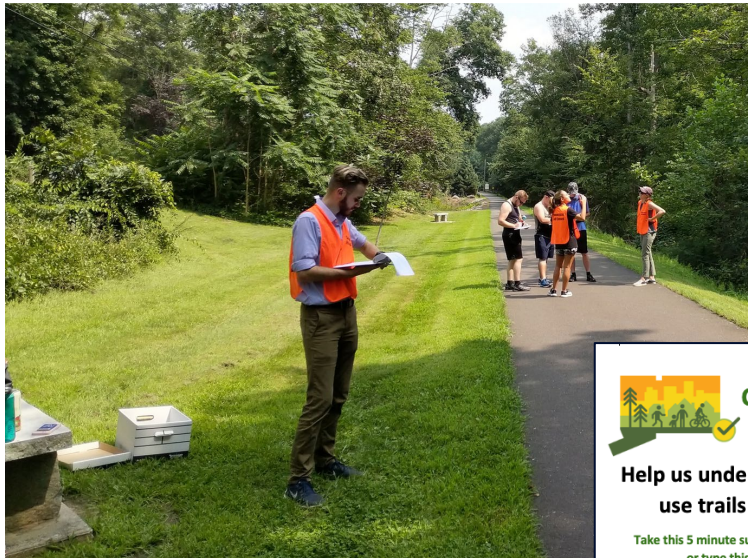

People Active on Trails for Health & Sustainability



CT Trail Census




Trail use counts recorded by infrared counters, trail user surveys, and public education.

Connecticut Trail Census Survey

Help us understand how people use trails in Connecticut

Take this 5 minute survey by scanning the QR Code or type this link in your browser s.uconn.edu/trailcensus2020



Thank you!

Learn more at cttrailcensus.uconn.edu, find us on Facebook or email cttrailcensus@gmail.com

Statewide

- > Urban, rural, suburban multi-use paths

Multi-year

- > 7th year of data collection
- > Identify patterns and trends

Volunteer-based

- > Active community participation
- > Data informed decision-making

What's New: CT Trail Census

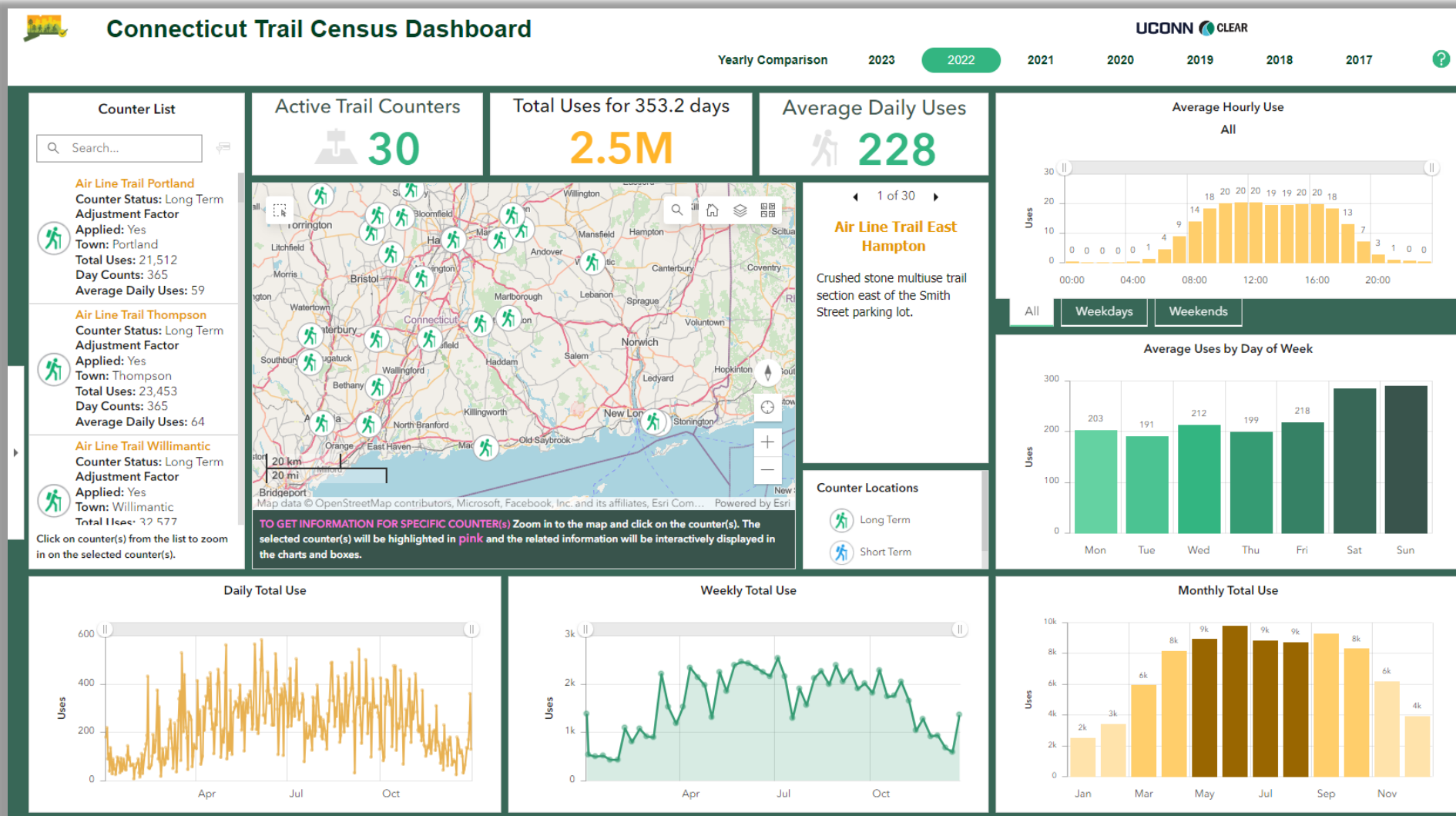


- > 2023 data dashboard complete, 2023 count data report
- > 2024 dashboard updated for 2 quarters
- > Short term count program
- > Count method research



https://cttrails.uconn.edu/ct_trail_census/

cttrails.uconn.edu/dashboard



CT Trail Finder



Connecticut Trail Finder is a free, interactive website designed to help people find all kinds of trails across the state.

The goal is to help people get out, be active, and explore Connecticut.

Benefits for the Trail User

- Find ALL kinds of trails (state, local, land trust, non-profit, etc.)
 - Search by many characteristics
 - Trail activity (hike, bike, horseback, etc.)
 - Difficulty and distance
 - Accessible trails
 - Features (waterfalls, views, etc.)
- Authorized trails only (ALL are manager approved)
- Accurate maps and information
- Show connections between trails and trail posts
- Easy to use even for new-comers (remove barriers)
- Free account - comment, add photos, etc.



Benefits for the Trail Manager

- > Only Manager-approved trails (including info & map)
- > Ability for alerts (closures, hazards, etc.)
- > Connect users to the trail organization
- > Tie trails to local economies
- > Compliment and promote local activities (does NOT replace them)
- > Prevent overuse by spreading it out



MANAGER BONUSES

- GIS work
- Link to the trail finder post
- Optional map that includes ALL of your trails
- Manager access to edit posts (optional)
- Work with nice people

Trail Finder is NOT

- > A crowd-sourced app
- > A tracking app
- > A GPS data collector
- > Automatically populated in any way
- > A replacement for any website or tool

What's New: CT Trail Finder



Trails, trails, trails!

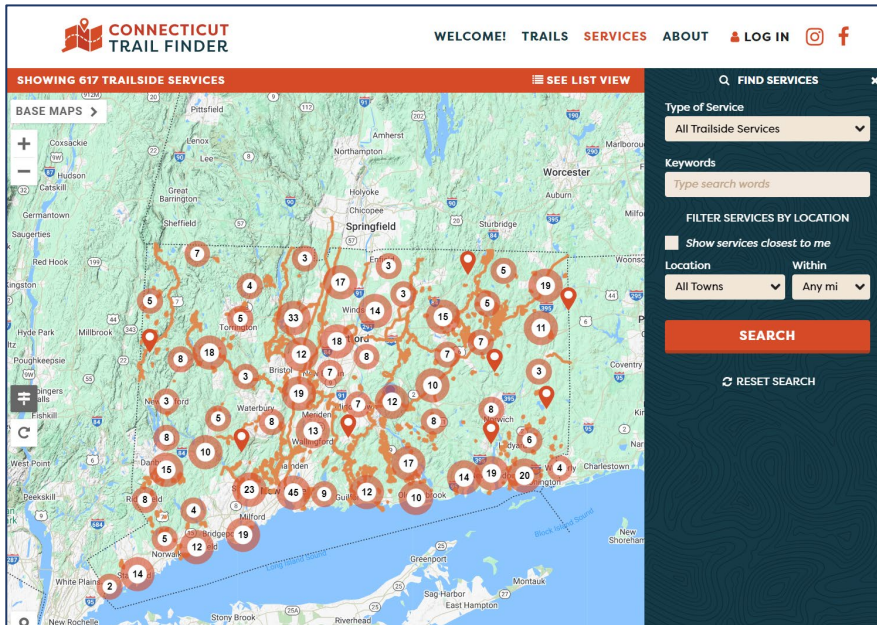
- 339 trail posts
- 1862 trail miles
- 303,572 trail post views

Trailside Services!

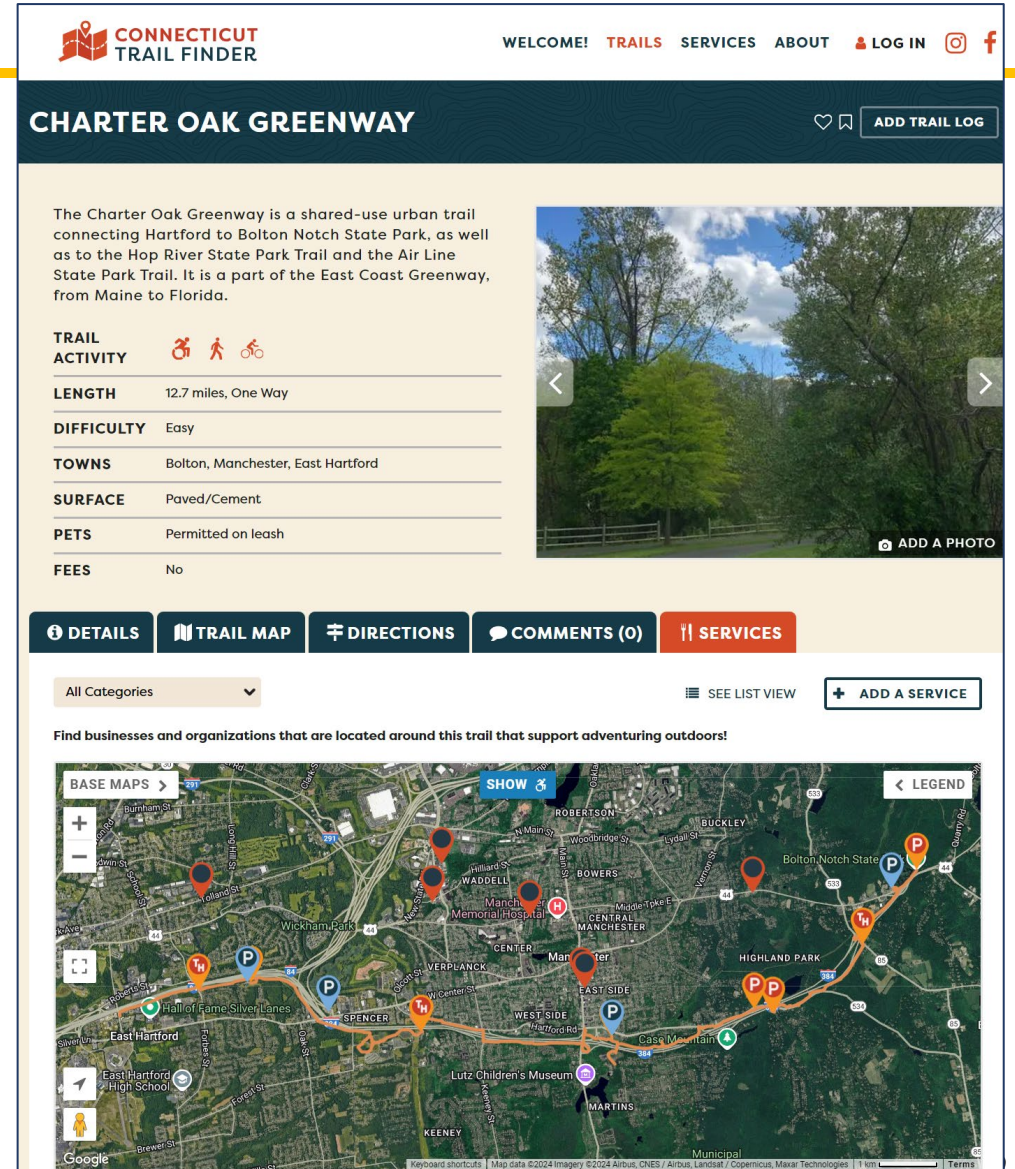
Connect local businesses and services to trails

Trailside Services

> Statewide Map View



> Services tab on each post



Trailside Services



- > Guidelines, definition, how to

<https://www.cttrailfinder.com/trailside-services-guidelines>

- > Add service – just requires free account



Work with us!



Thank you

Emily Wilson

emily.wilson@uconn.edu

trails@uconn.edu

<https://cttrailfinder.com>

<https://cttrails.uconn.edu>

 <https://www.facebook.com/CTTrailFinder/>

 <https://www.instagram.com/cttrailfinder/>