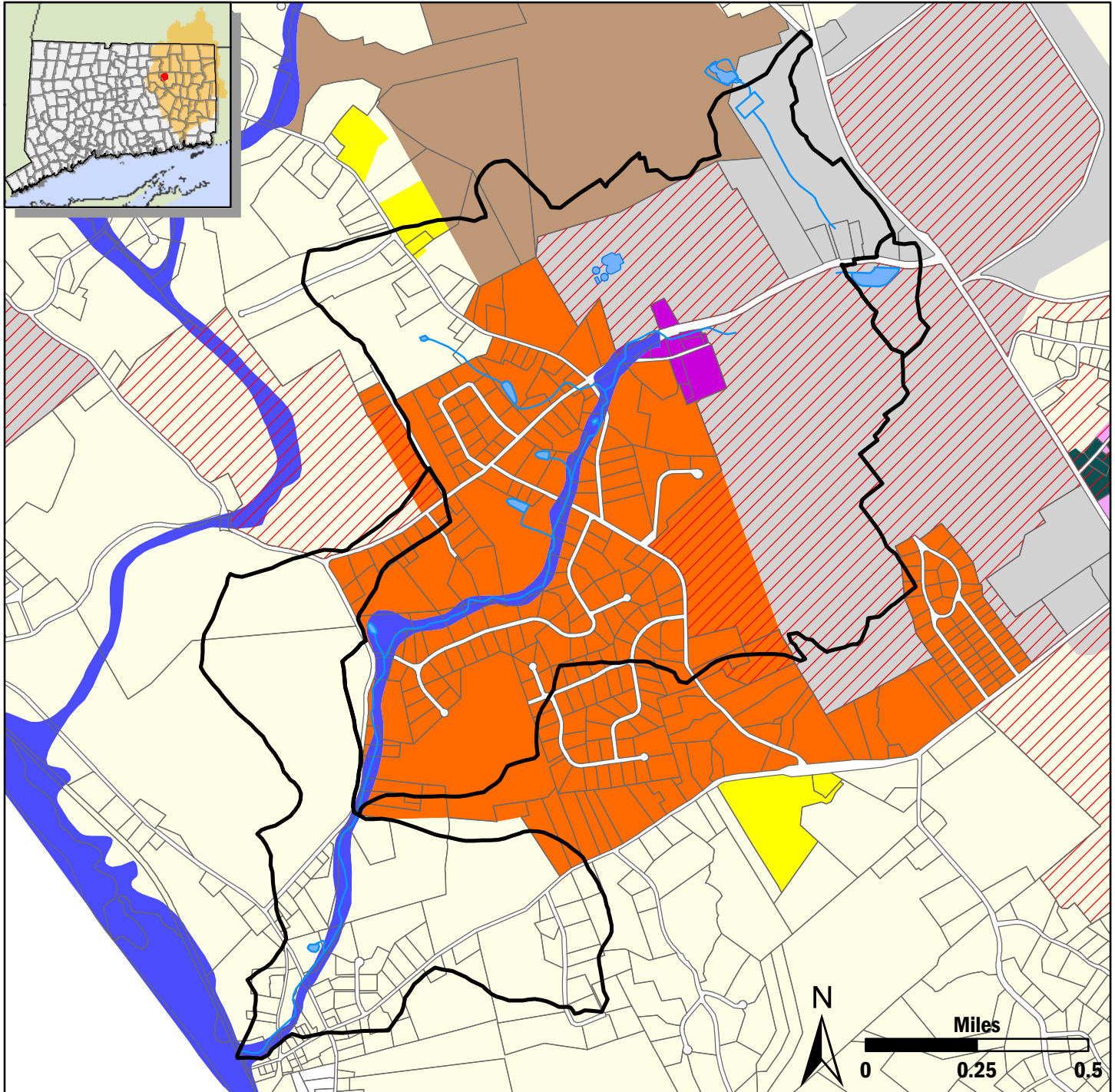


Eagleville Brook Watershed

Parcels and Zoning



This project is assisting the Univ. of Connecticut and the Town of Mansfield with their response to the first impervious cover TMDL in the country. Funded by CT DEP, UConn and the Town of Mansfield.

Project information: clear.uconn.edu/projects/tmdl/
 Interactive map and data information:
clear.uconn.edu/tmdl/watershed.htm

- | | |
|----------------------------|-------------------------------------|
| Eagleville Brook Basins | Design Multiple Res. (DMR) |
| Hydro (streams) | Planned Business 2 (PB-2) |
| Hydro (lakes and ponds) | Planned Business 4 (PB-4) |
| Mansfield parcels | Storrs Ctr. Design District (SC-DD) |
| UConn Mansfield Parcels | Research and Dev. Ltd. Ind. (RD/LI) |
| Mansfield Zoning | Flood Hazard (FH) |
| Res. 90 (R-90) | Institutional (I) |
| Rural Ag. Res. 90 (RAR-90) | Business (B) |

This map is intended for general information, planning and educational purposes only. It contains no authoritative positional information.

Copyright University of Connecticut.
 This map created 8/4/10.

See CLEAR website for more information <http://clear.uconn.edu>.



CLEAR
 Center for Land Use Education & Research



University of Connecticut
 COOPERATIVE EXTENSION SYSTEM
 College of Agriculture and Natural Resources