

*** LEGEND ***

- STONE WALL
- FENCE
- IRON PIN
- MERESTONE
- TO BE SET
- LEDGE OR ROCK
- EXISTING CONTOUR
- PROPOSED CONTOUR
- UTILITY POLE
- TEST HOLE
- PERC TEST
- SILT FENCE
- HAY BALES

C D.S.1
 I 18°38'05" LT
 Ic 18°38'05"
 Da 13°28'53"
 CD S 36°39'11" E
 T 69.73 FT
 R 425.00 FT
 L 138.23 FT
 LC 137.62 FT
 E 5.88 FT
 M 5.61 FT

C21
 I 03°29'31" RT
 Ic 03°29'31"
 Da 13°28'53"
 CD N 25°35'23" W
 T 12.96 FT
 R 425.00 FT
 L 25.90 FT
 LC 25.90 FT
 E 0.20 FT
 M 0.20 FT

L20
 S 21°04'00" E
 15.84 FT

C18
 I 08°19'51" LT
 Ic 08°19'51"
 Da 88°08'50"
 CD N 32°30'03" W
 T 4.73 FT
 R 65.00 FT
 L 9.45 FT
 LC 9.44 FT
 E 0.17 FT
 M 0.17 FT

C17
 I 53°50'09" LT
 Ic 53°50'09"
 Da 88°08'50"
 CD N 01°25'03" W
 T 33.00 FT
 R 65.00 FT
 L 61.07 FT
 LC 58.85 FT
 E 7.90 FT
 M 7.04 FT

C16
 I 47°52'48" LT
 Ic 47°52'48"
 Da 88°08'50"
 CD N 80°40'33" E
 T 28.86 FT
 R 65.00 FT
 L 54.32 FT
 LC 54.75 FT
 E 6.12 FT
 M 5.59 FT

C D.S.2
 I 31°22'08" LT
 Ic 31°22'08"
 Da 88°08'50"
 CD S 41°11'05" W
 T 18.25 FT
 R 65.00 FT
 L 35.59 FT
 LC 35.14 FT
 E 2.51 FT
 M 2.42 FT

C EASE. 1
 I 98°12'48" RT
 Ic 98°12'48"
 Da 229°10'59"
 CD N 81°02'30" W
 T 28.87 FT
 R 25.00 FT
 L 42.85 FT
 LC 37.80 FT
 E 13.19 FT
 M 8.63 FT

C EASE.
 I 14°28'22" RT
 Ic 14°28'22"
 Da 15°16'44"
 CD S 38°44'03" E
 T 47.62 FT
 R 375.00 FT
 L 94.72 FT
 LC 94.47 FT
 E 3.01 FT
 M 2.99 FT

C10
 I 07°39'15" RT
 Ic 07°39'15"
 Da 15°16'44"
 CD N 27°40'15" W
 T 25.09 FT
 R 375.00 FT
 L 50.10 FT
 LC 50.06 FT
 E 0.84 FT
 M 0.84 FT

C EASE. 2
 I 90°00'00" RT
 Ic 90°00'00"
 Da 229°10'59"
 CD N 00°58'14" W
 T 25.00 FT
 R 25.00 FT
 L 39.27 FT
 LC 35.36 FT
 E 10.36 FT
 M 7.32 FT

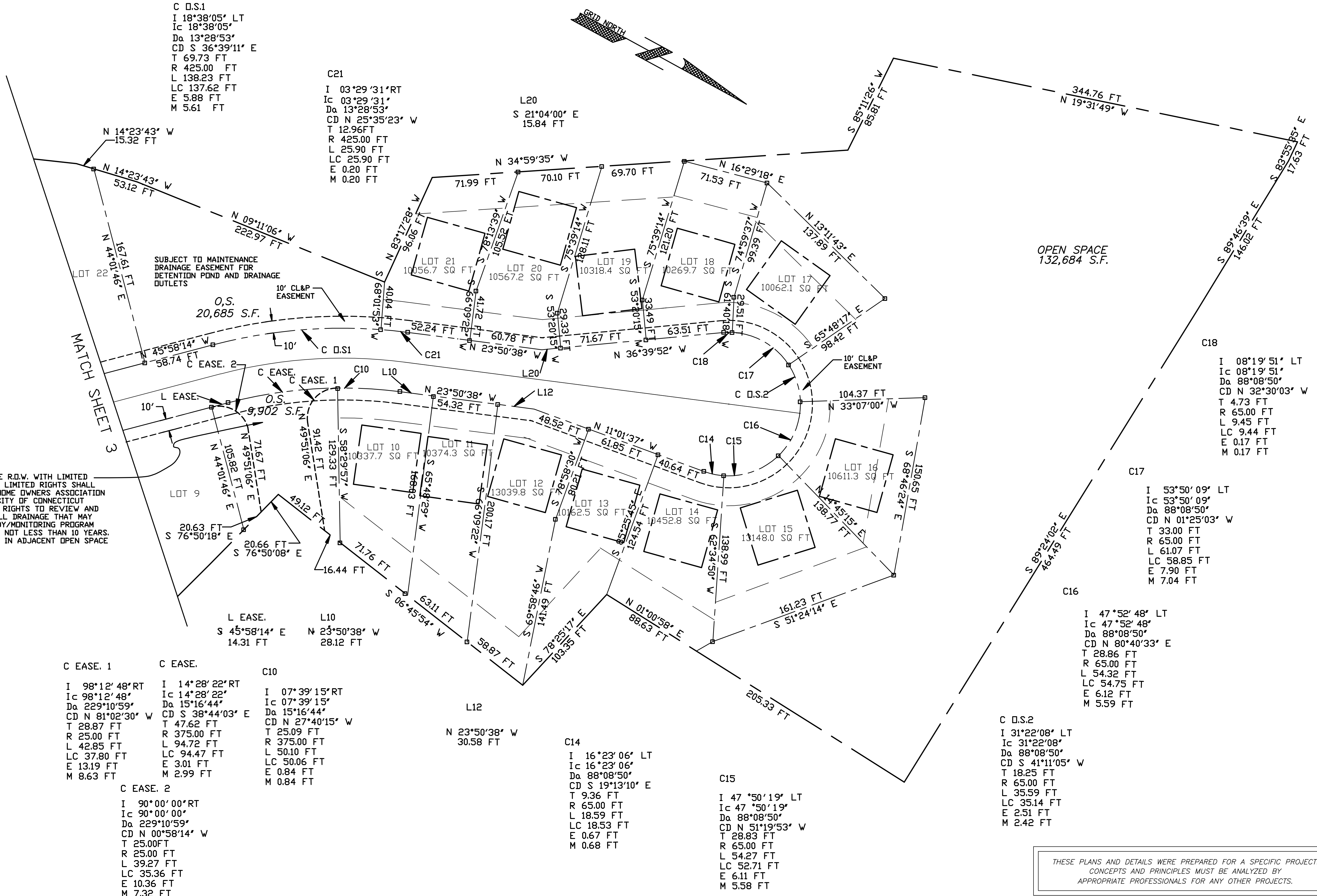
C14
 I 16°23'06" LT
 Ic 16°23'06"
 Da 88°08'50"
 CD S 19°13'10" E
 T 9.36 FT
 R 65.00 FT
 L 18.59 FT
 LC 18.53 FT
 E 0.67 FT
 M 0.68 FT

C15
 I 47°50'19" LT
 Ic 47°50'19"
 Da 88°08'50"
 CD N 51°19'53" W
 T 28.83 FT
 R 65.00 FT
 L 54.27 FT
 LC 52.71 FT
 E 6.11 FT
 M 5.58 FT

RESERVED FUTURE R.O.W. WITH LIMITED RIGHTS TO DRAIN. LIMITED RIGHTS SHALL MEAN THAT THE HOME OWNERS ASSOCIATION AND THE UNIVERSITY OF CONNECTICUT SHALL HAVE THE RIGHTS TO REVIEW AND LIMIT ANY AND ALL DRAINAGE THAT MAY AFFECT THE STUDY/MONITORING PROGRAM FOR A PERIOD OF NOT LESS THAN 10 YEARS. RIGHTS TO GRADE IN ADJACENT OPEN SPACE

SUBJECT TO MAINTENANCE DRAINAGE EASEMENT FOR DETENTION POND AND DRAINAGE OUTLETS

OPEN SPACE
 132,684 S.F.



THESE PLANS AND DETAILS WERE PREPARED FOR A SPECIFIC PROJECT. CONCEPTS AND PRINCIPLES MUST BE ANALYZED BY APPROPRIATE PROFESSIONALS FOR ANY OTHER PROJECTS.

DATE	REVISION
2/13/97	GRID NORTH
3/6/97	MERESTONE
6/13/97	FUTURE R.O.W.
10/6/97	CL&P EASEMENTS

LOT LAYOUT - "BMP - STUDY"
 GLEN BROOK GREEN, JORDAN COVE URBAN WATERSHED
 SEC.319 NATIONAL MONITORING PROGRAM PROJECT

25 FOG PLAIN ROAD

WATERFORD, CONNECTICUT

SHEET: 4 OF 14
 SCALE: 1" = 40'
 DATE: OCT. 21, 1996

D.W. GERWICK ENGINEERING
 P.O. BOX 539
 WATERFORD, CONNECTICUT
 203-442-2201 JN 95 - 133
 DWGTTL:95133LT2