

**On the Front
Line:
Living Shorelines – A
Municipal Perspective**

Presented by:

Denise Savageau
Conservation Director
Town of Greenwich





Municipalities are on the frontline when it comes to climate change adaptation, responding to sea level rise and severe storm events.

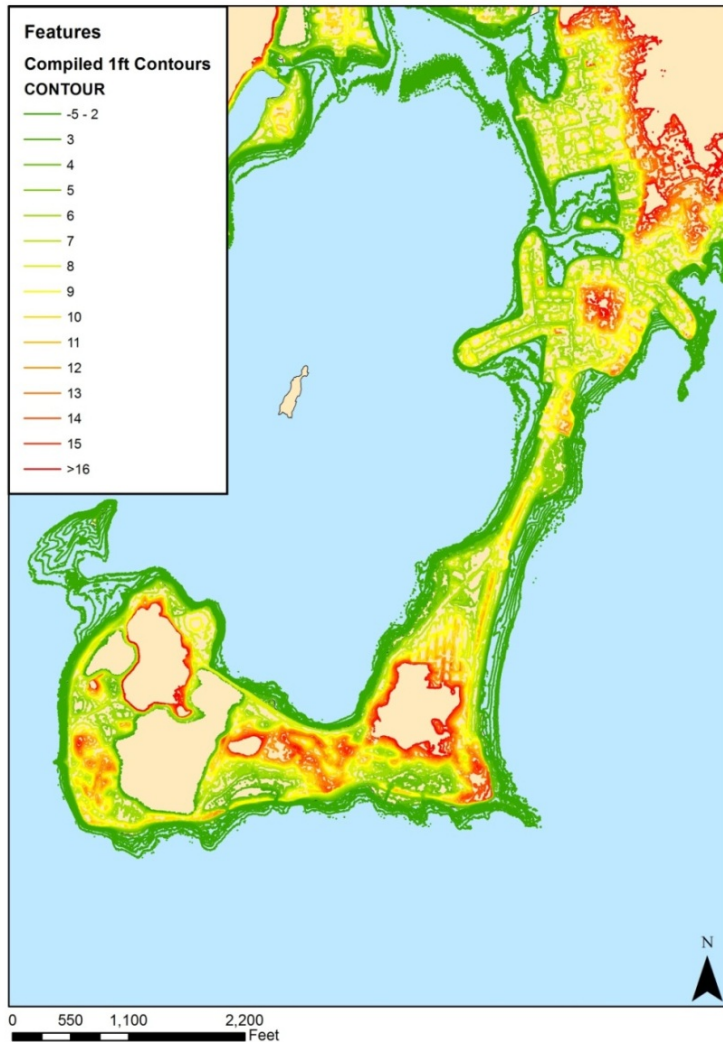
However, there is limited understanding of sea level, tidal systems, and coastal flooding. And few folks understand the natural systems along our coastline and the ecosystem services they provide.

Greenwich Point is a town-owned park that sustained much damage from both Irene and Sandy. Much more than a recreational facility, it is recognized as an Important Bird Area and has some of the most productive shellfish beds in Long Island Sound.



Greenwich Point has been nominated for inclusion on the National Register of Historic Places and includes the recently restored Innis Arden Cottage which sustained some damage on wave side but was spared major damage.

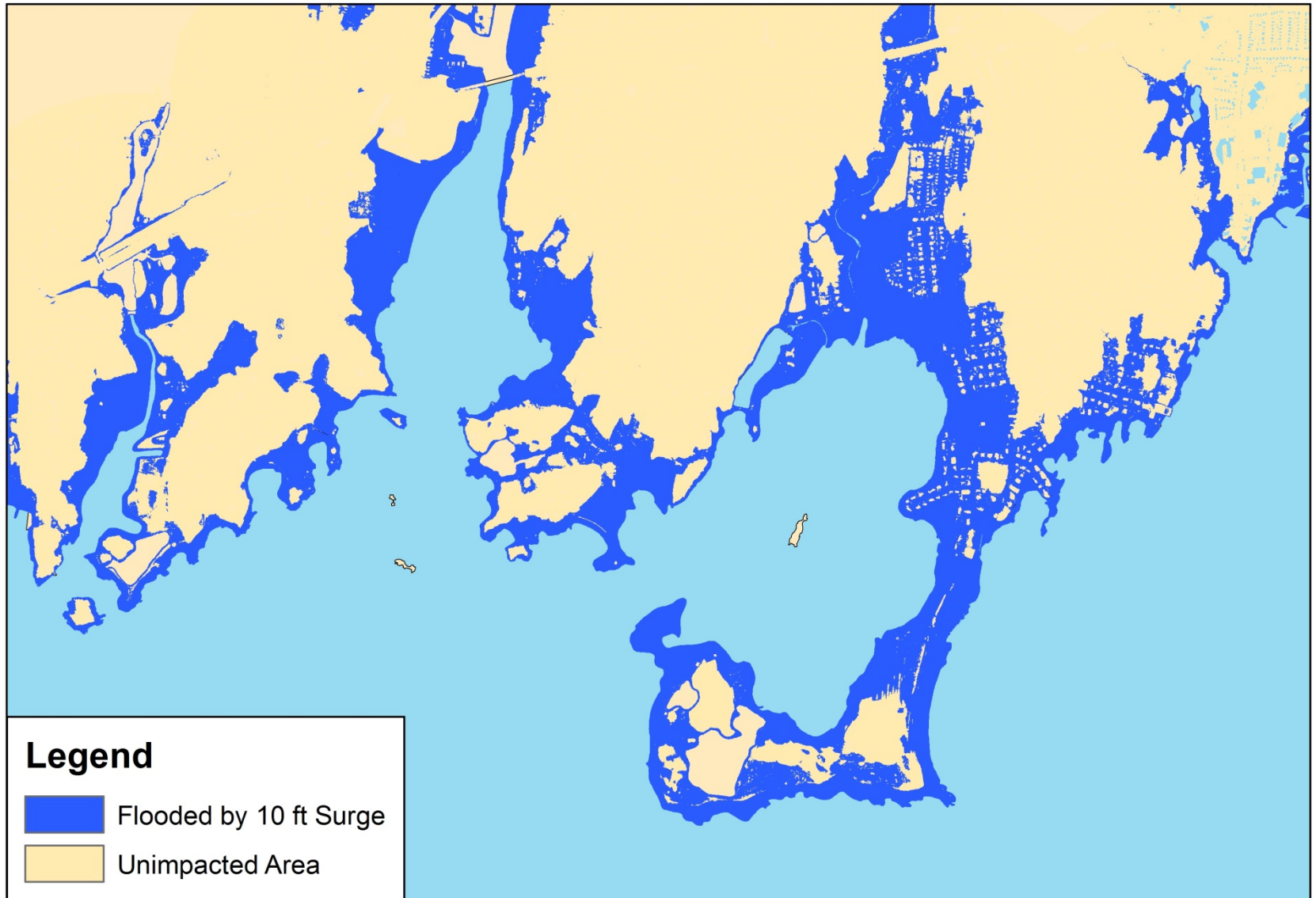
1 ft Contours Greenwich Point: Greenwich CT



Post Super Storm Sandy:

- Much of Greenwich Point under water and was subject to high velocity wave action.
- P&R worked hard to clear roads and debris to restore and re-open Greenwich Point to residents
- Conservation took on restoration of dune and tidal wetlands and began to take a more detailed look at the ecosystem services provided by natural systems at the park

Hurricane Sandy 10 ft Storm Surge: Old Greenwich CT



0 0.125 0.25 0.5 0.75 1 Miles

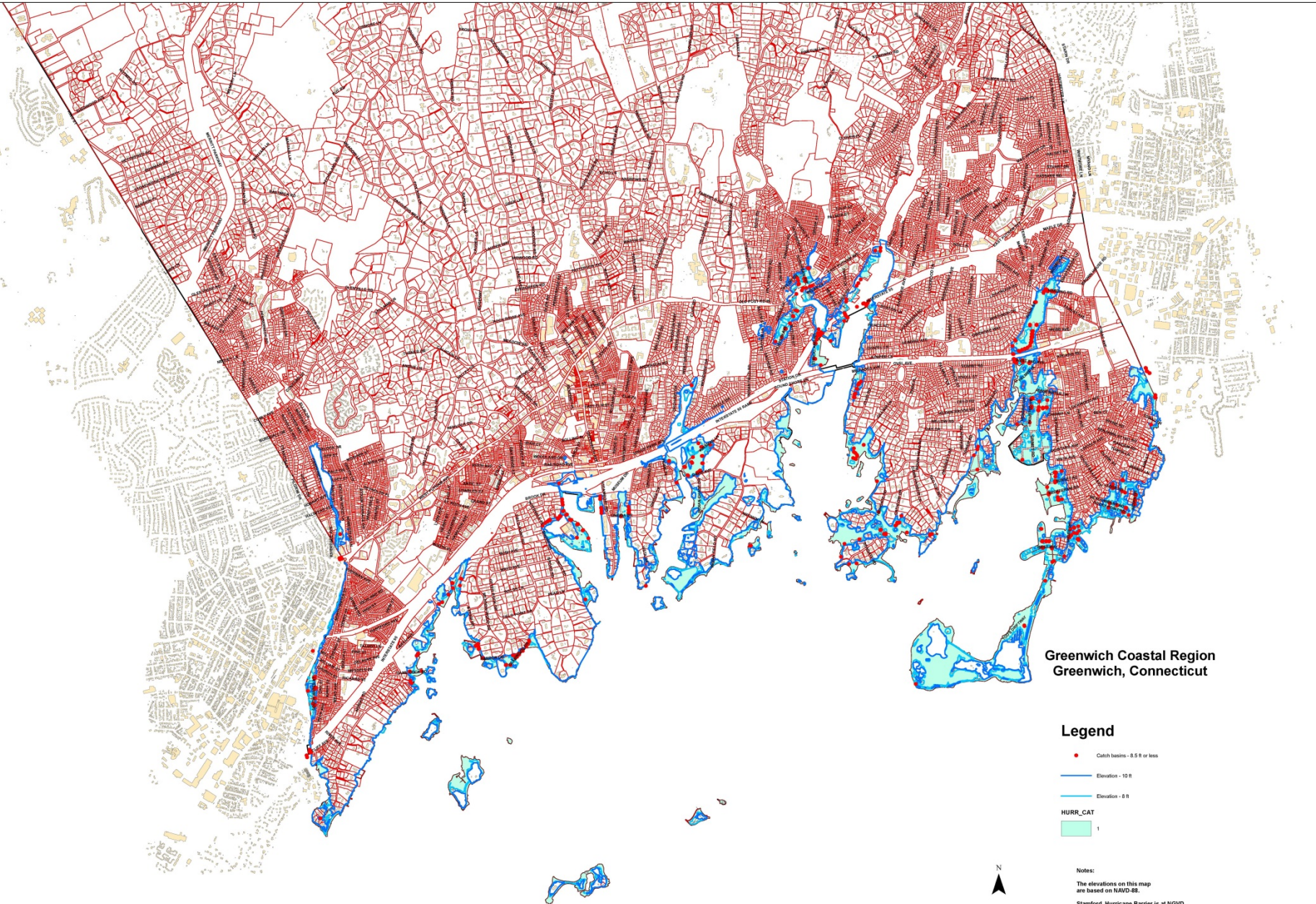
1 inch = 1,990 feet



Dune restoration 2013







**Greenwich Coastal Region
Greenwich, Connecticut**

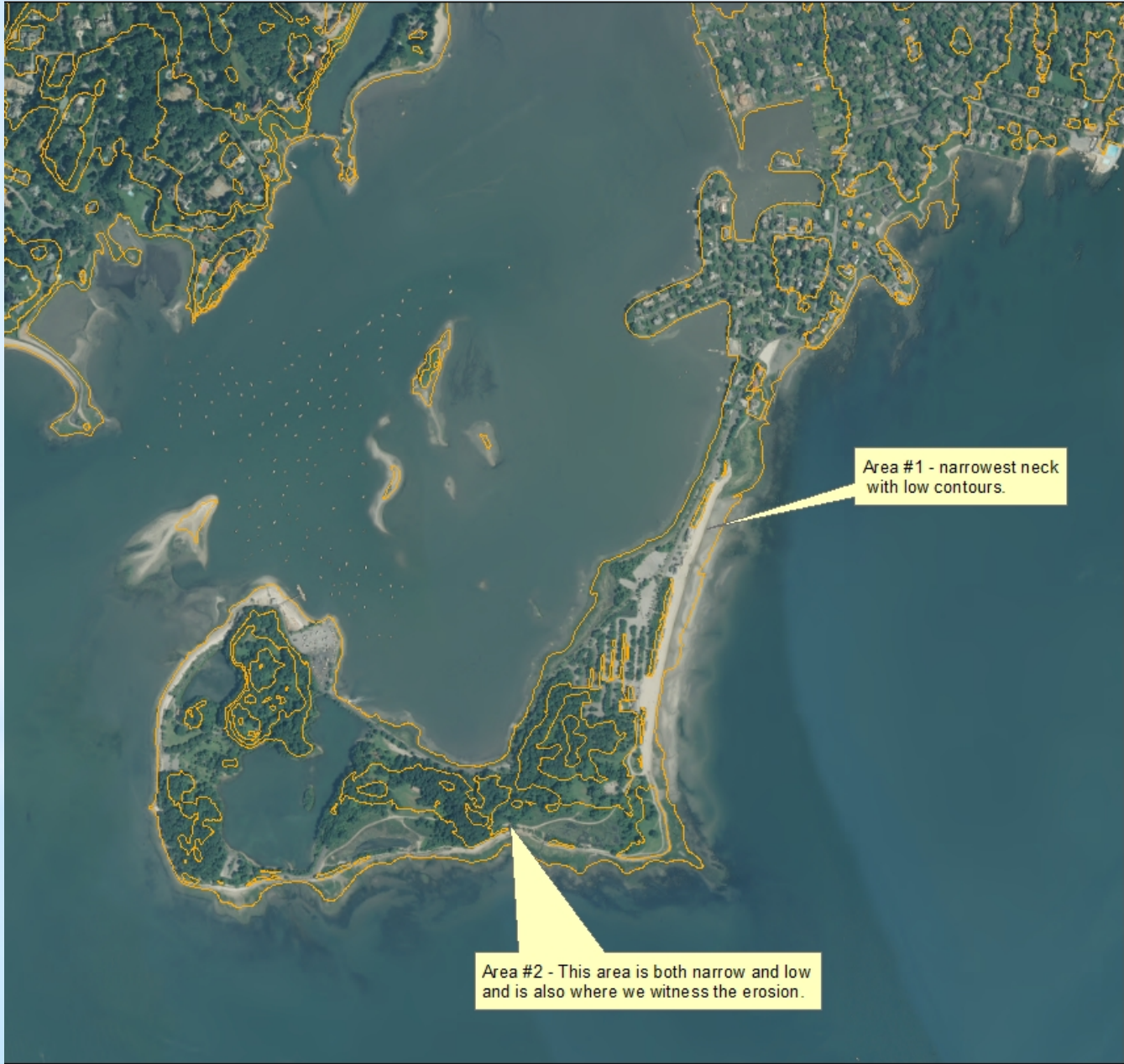
Legend

- Catch basins - 8.5 ft or less
- Elevation - 10 ft
- Elevation - 8 ft
- HURR_CAT 1



Notes:
The elevations on this map are based on NAVD-88.
Stamford Hurricane Barrier is at NGVD. Generally about a 1 ft higher than NAVD.

1 inch = 1,174.962405 feet



0 1,000 Feet

1 inch = 1,000 feet

Area #1 - narrowest neck with low contours.

Area #2 - This area is both narrow and low and is also where we witness the erosion.

- Legend**
- 10' contours
 - 2016 Coastal CT Orthophotography
 - RGB
 - Red: Band_1
 - Green: Band_2
 - Blue: Band_3