

Climate Adaptation Academy



WELCOME

Legal Issues in the Age of Climate

Adaptation



Goals for today

- **Establish the context for continuing discussions and actions**
- **Identify potential legislative/regulatory needs/proposals**
- **Identify continuing legal uncertainties ripe for**
 - **Academic research**
 - **AG opinions**
 - **Requests for clarification of federal rules**
 - **Partnerships with CT real estate bar, insurance bar**



Attack of the Chicago climate change maggots



Sections 

The Washington Post

Search



Sign In

Subscribe

Danielle Paquette · Uneven recovery · 4 hours ago

The cost of climate change

Attack of the Chicago climate change maggots

The effects of climate change are creeping into Chicago's low-income neighborhoods.





www.h2realty.com





The Washington Post

In May, a year after sewage swamped Burns's basement, an insurance giant took to an Illinois courtroom for what might have been a publicity stunt, or what might be a preview of a nationwide battle over who foots the bill for extreme weather events linked to climate change. Farmer's Insurance Co. sued the city of Chicago for failing to prepare for the effects of global warming.

The city "should have known," the lawsuit alleged, "that climate change in Cook County has resulted in greater rainfall volume ... than pre-1970 rainfall history evidenced." The storms are not an act of God, the suit claimed, but a carbon-driven reality outlined in Chicago's own Climate Action Plan, published in 2010.



Who is going to pay?





State Representative

JAMES M. ALBIS

Serving the 99th Assembly District - East Haven

- **Co-Chair, House Environment Committee**
- **Chair of the Shoreline Preservation Task Force**
- **Finance, Revenue, & Bonding Committee**
- **Executive & Legislative Nominations Committee**
- **Connecticut League of Conservation Voters legislative champion**



Legal Issues in the Age of Climate Adaptation

James Albis

Nov. 6, 2015

Old Saybrook, CT

Agenda

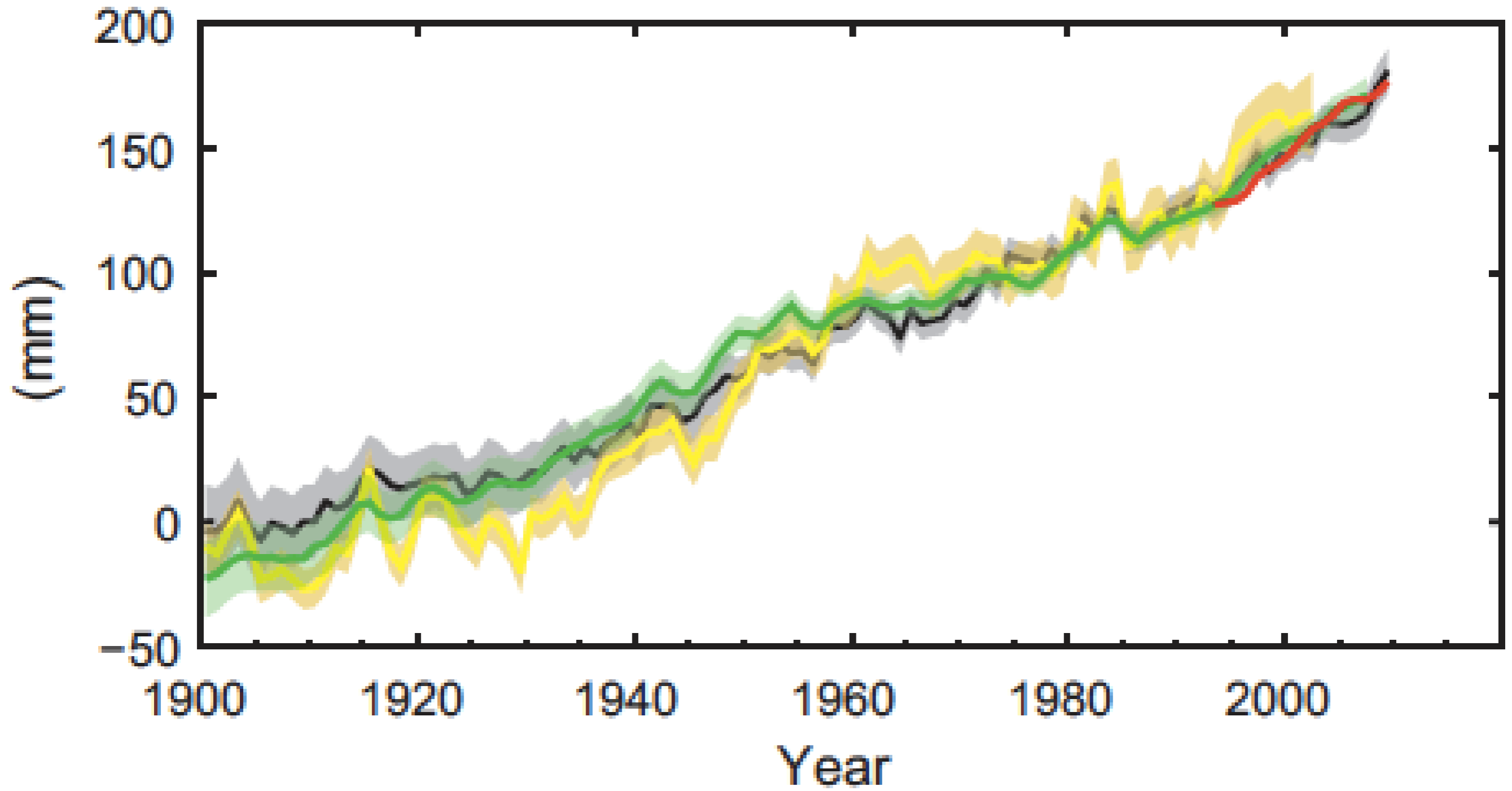
1. Science/Impacts

2. State Responses

3. Political Challenges

1. Science/Impacts

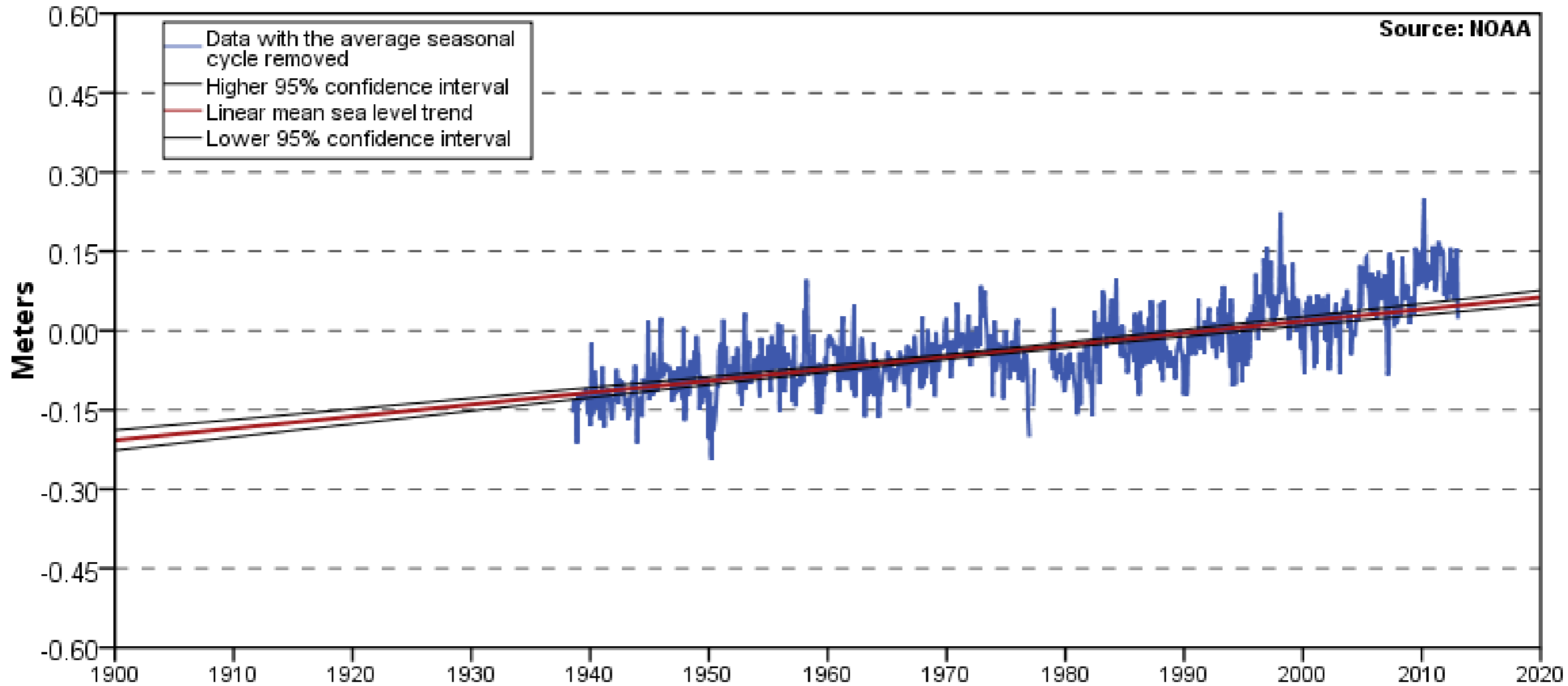
Global average sea level change



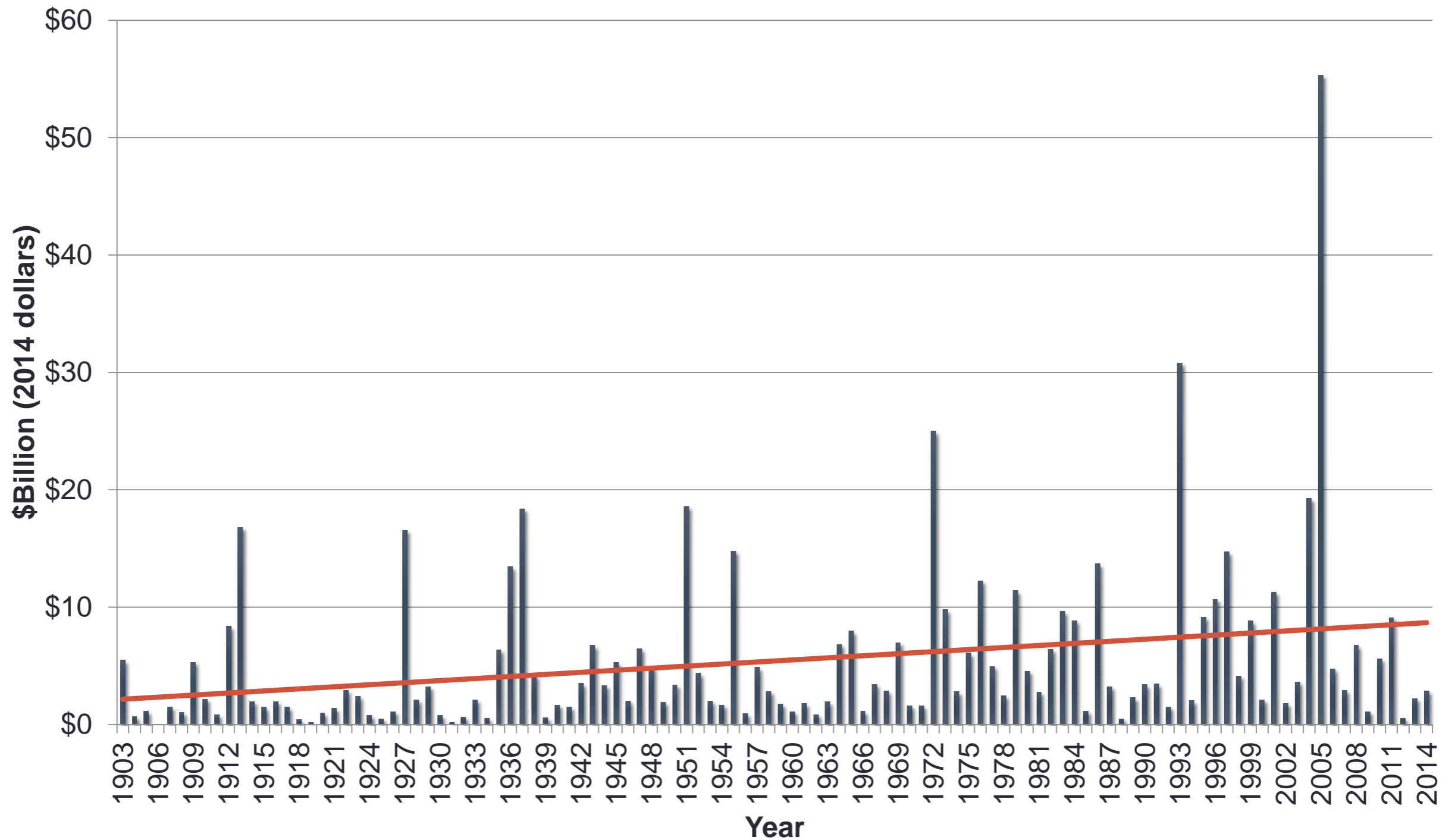
Global mean sea level rise relative to the 1900-1905 average.
Source: IPCC AR5 Summary for Policymakers.

New London, CT

2.25 +/- 0.25 mm/yr



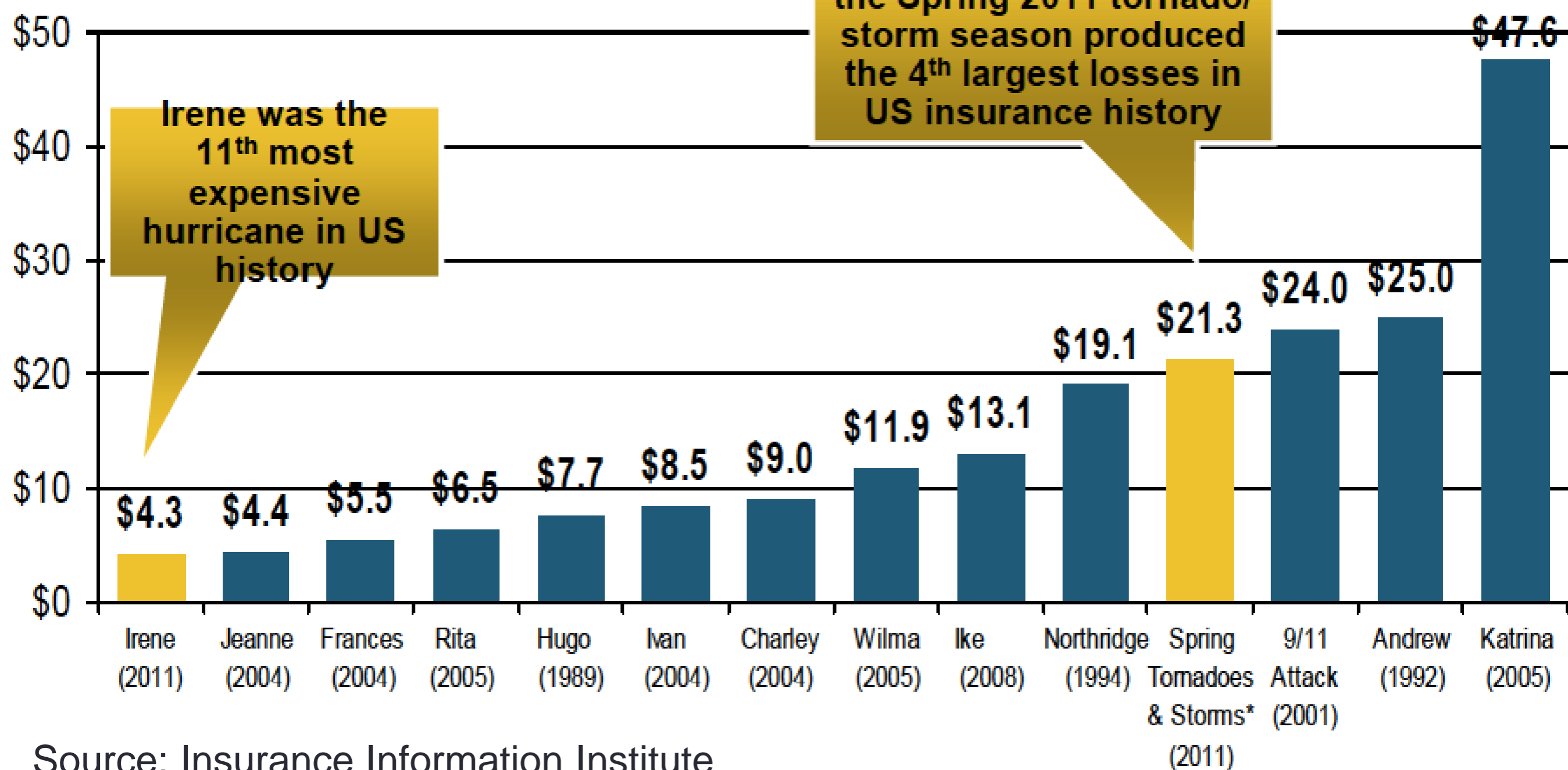
Flood Damages by Year



Source: NOAA National Weather Service

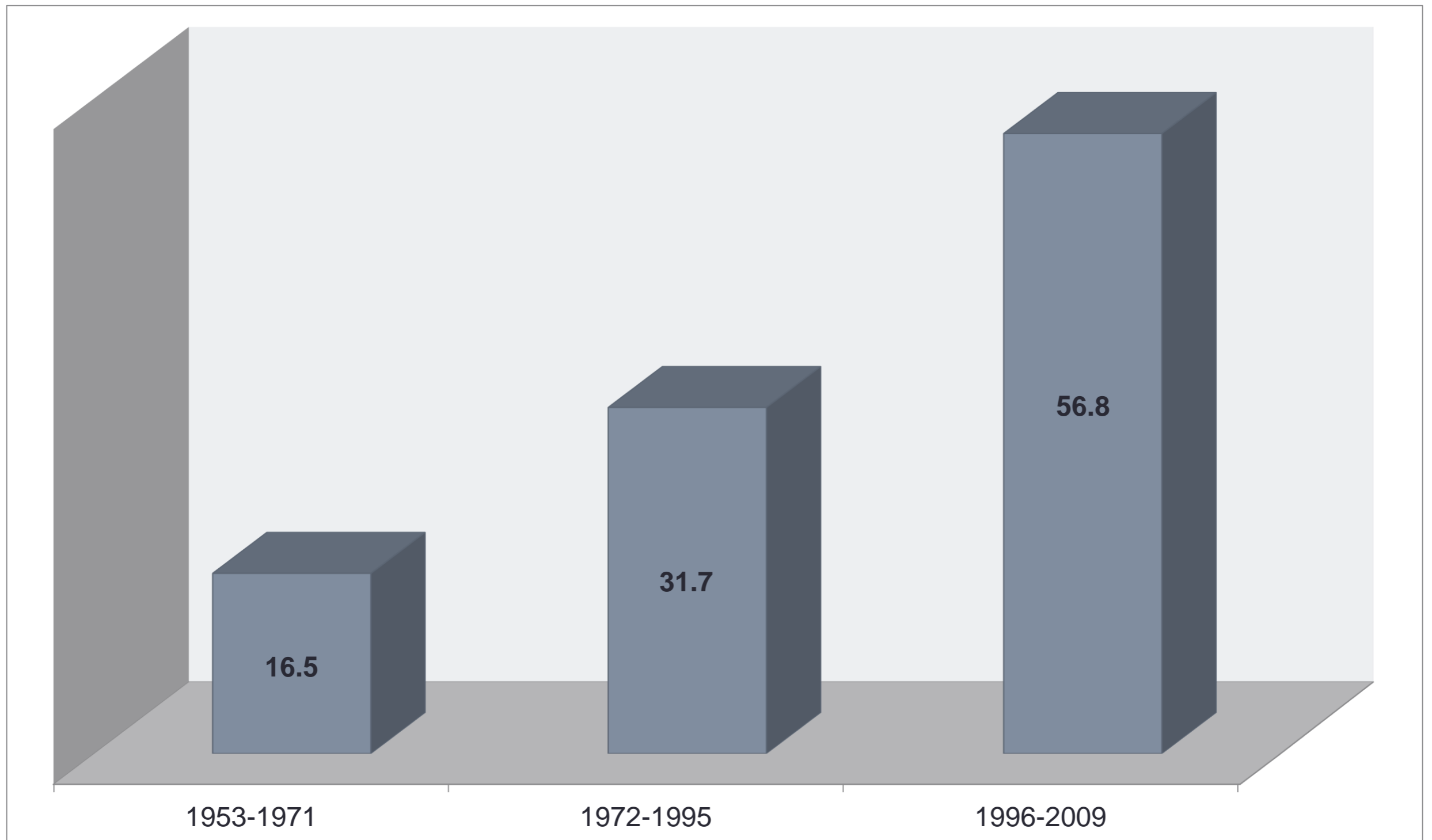
Costliest Disasters, U.S. History

Insured Losses, 2011 Dollars,
\$ Billions



Source: Insurance Information Institute

Avg Annual Federal Disaster Declarations



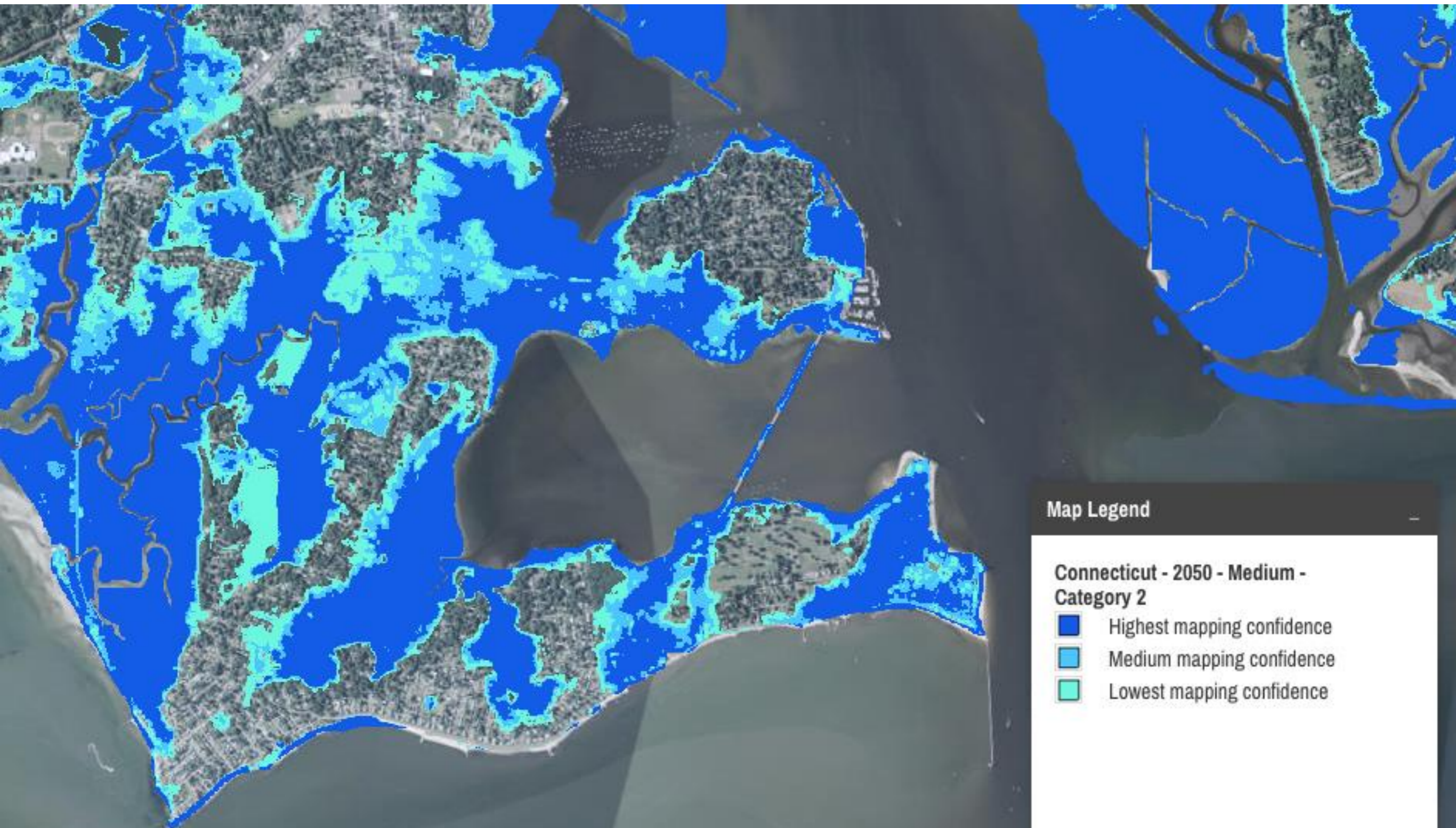
Old Saybrook



2050, Medium SLR Scenario



2050, Medium SLR, Category 2



2. State Responses

Legislative Response

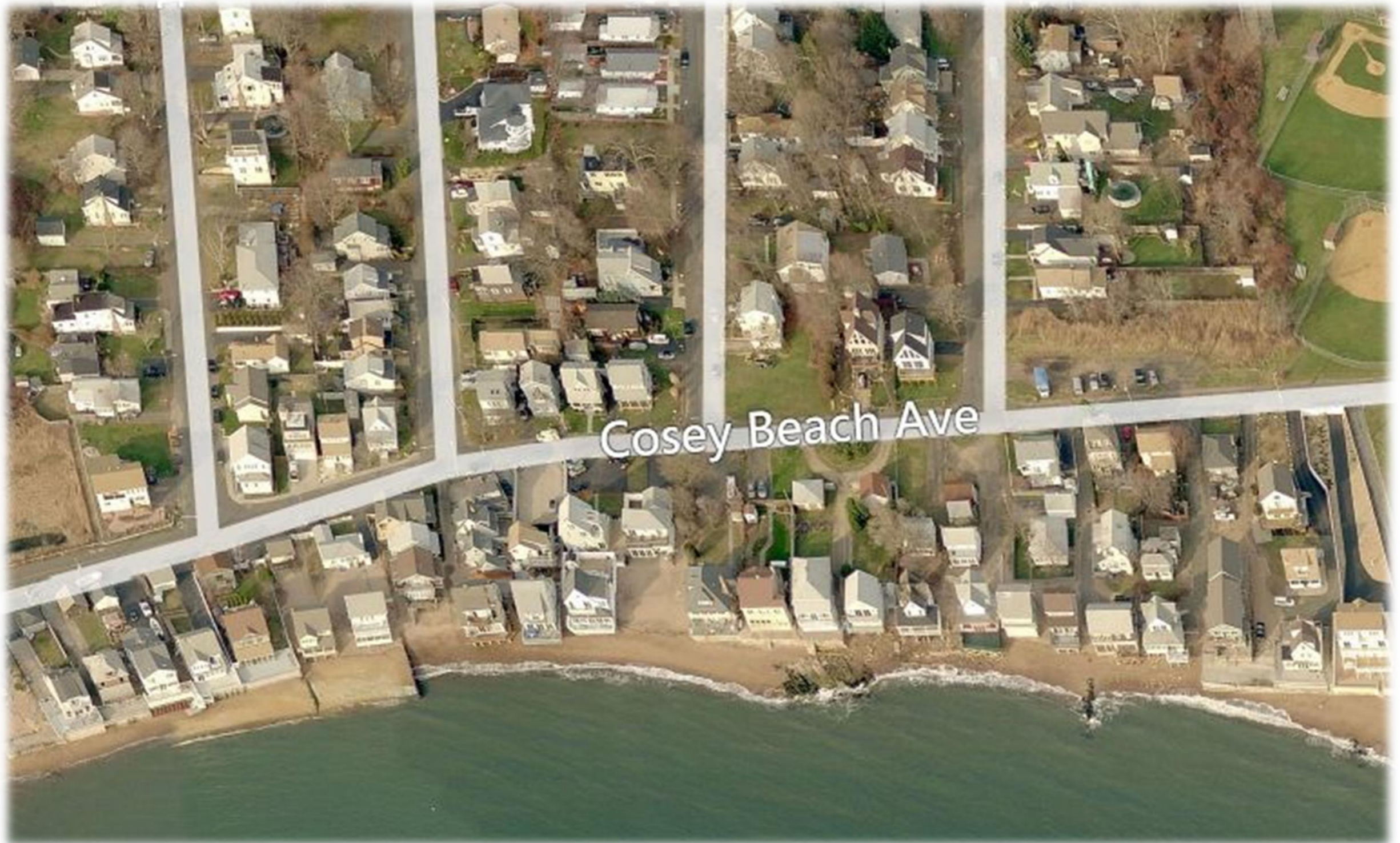
- Shoreline Preservation Task Force
- Public Act 12-101
 - Sea Level Rise incorporated into CT Coastal Management Act
 - Sea Level Rise incorporated into State Plan of Conservation and Development
- Public Act 13-15
 - Clean Water Fund projects must plan for sea level rise
- Special Act 13-9
 - Establish a CT Center for Coasts

Executive Response

- Shore Up CT
 - Low-interest loan fund for floodproofing measures such as raising homes
- CT Institute for Resilience and Climate Adaptation (CIRCA)
 - Product of Special Act 13-9
 - Assisting municipalities adapt to climate change
- Governor's Council on Climate Change (GC3)

3. Political Challenges

Municipal Land Use



Legislative Barriers



Communication

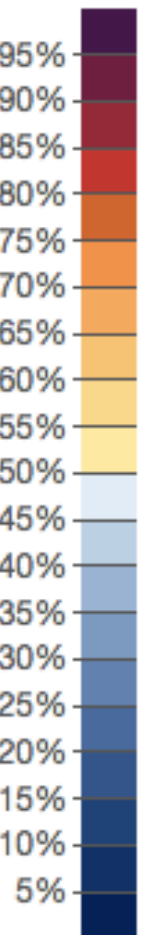
Estimated % of adults who think global warming is already harming people in the US now or within 10 years, 2014

Display model output: Global warming is already harming people in the US

Permalink



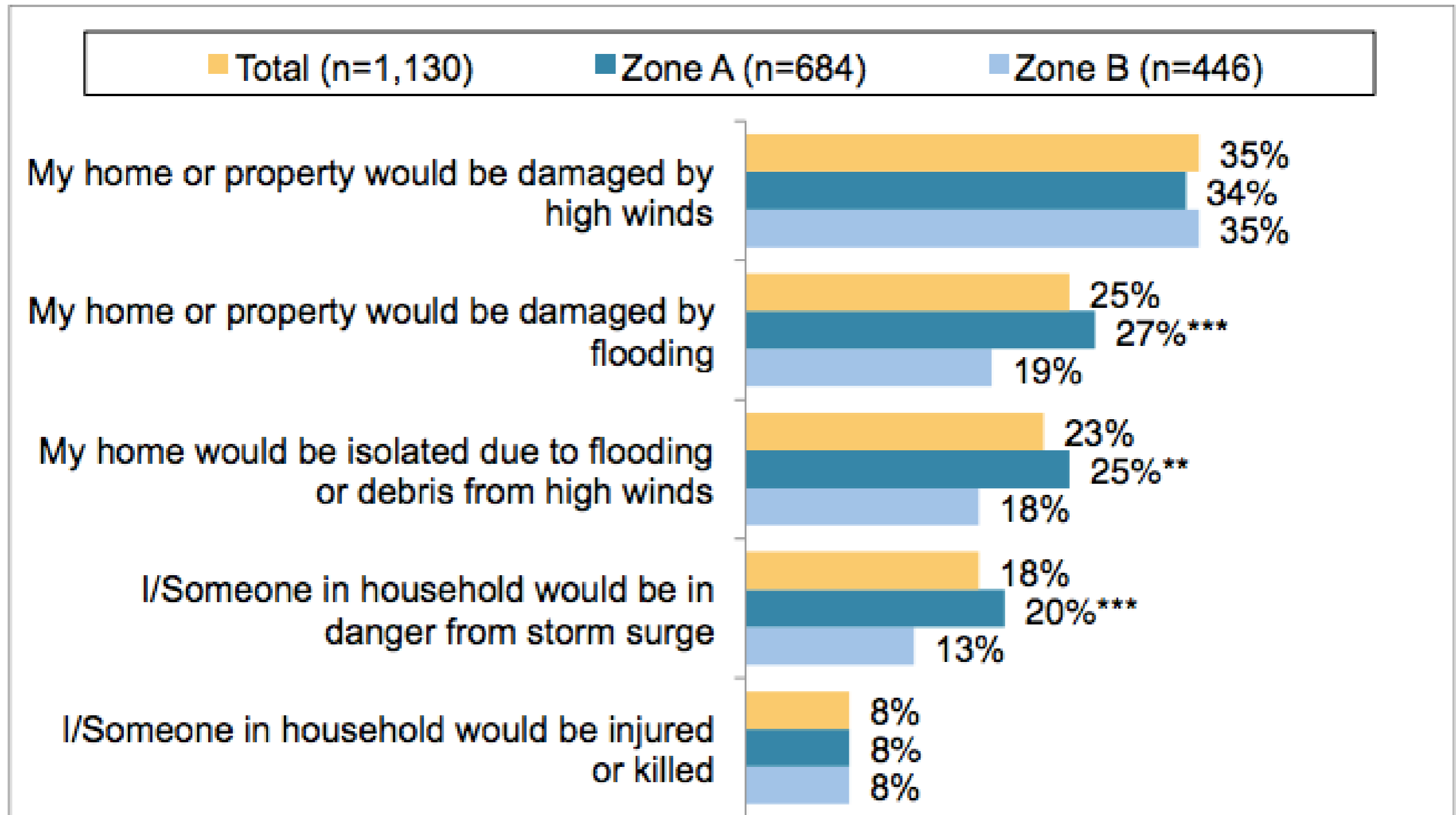
- National
- State
- Congressional District
- County**



Source: Yale Project on Climate Change Communication

Attitudes

% who believe that the following probably or definitely would happen...

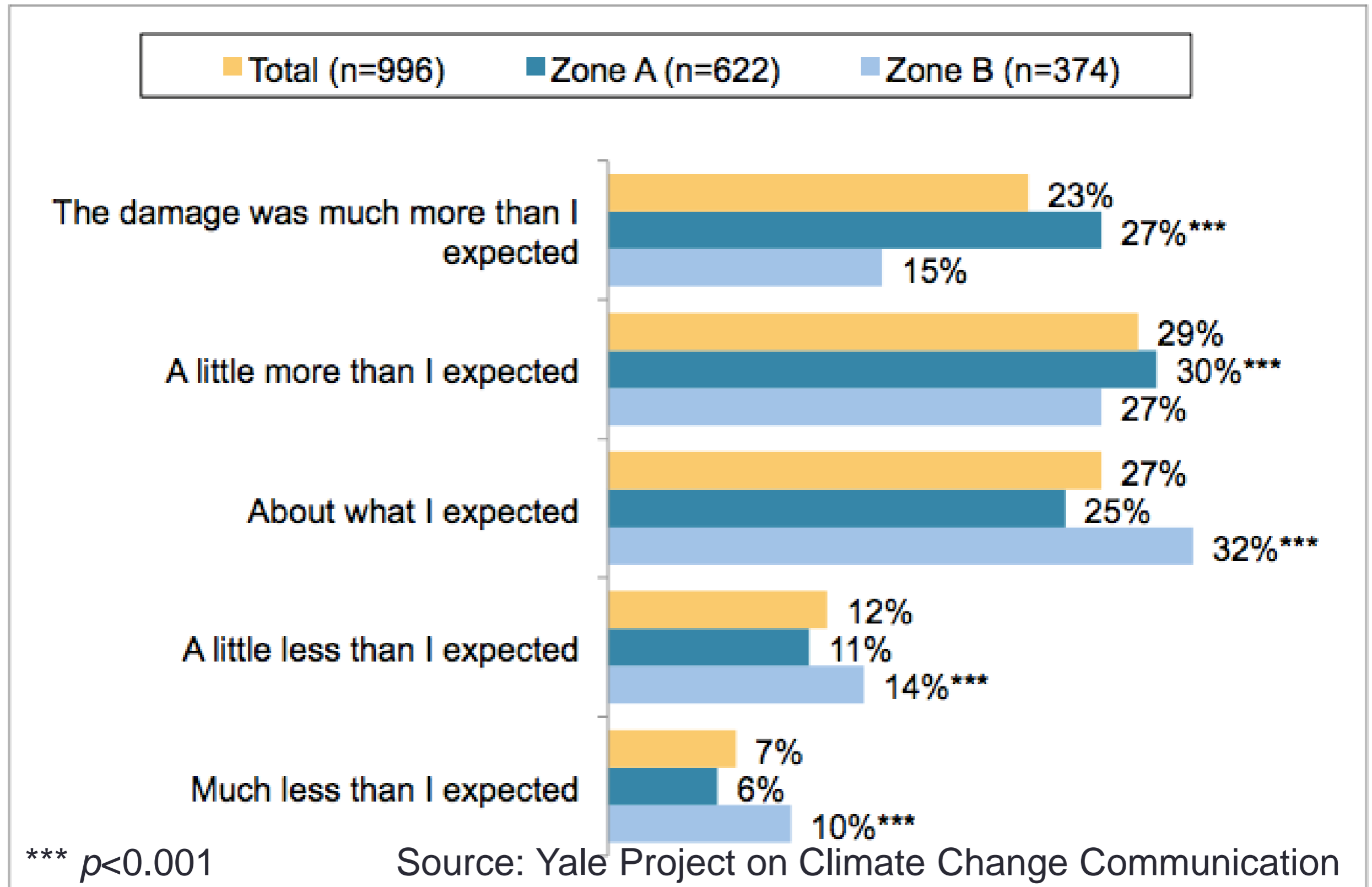


*** $p < 0.001$

Source: Yale Project on Climate Change Communication

Attitudes

Was the damage from recent storms more or less than you expected?



Thank You

james.albis@cga.ct.gov